

# Fly Me To The Moonでメロディフェイクソロ

©KAI ICHIKAWA

元のメロディ

元のメロディ


F#m7 Bm7 E7 Amaj7 A7

[illegible]

9 Bm7 E7 Amaj7 F#7


The image shows measures 9 through 12 of a musical score. Measure 9 starts with a treble clef and a key signature of three sharps (F#, C#, G#). The notes are B2 (quarter), D3 (quarter), E3 (half), and F#3 (quarter). Measure 10 has a whole rest. Measure 11 has a whole note F#3. Measure 12 has a whole note G#3. Above the staff, the chords Bm7, E7, Amaj7, and F#7 are indicated for measures 9, 10, 11, and 12 respectively.

13 Bm7 E7 Amaj7 G#m7b5 C#7




音を減らす

音を減らす



F#m7 Bm7 E7 Amaj7 A7

21 Dmaj7 G#m7b5 C#7 F#m7 F#7



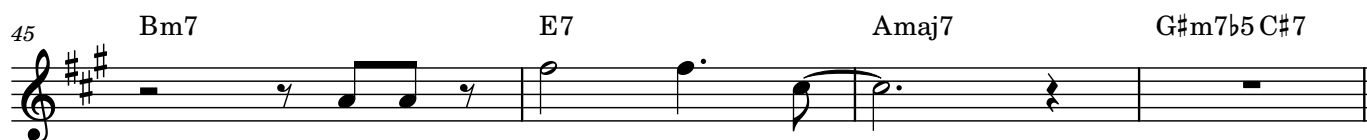
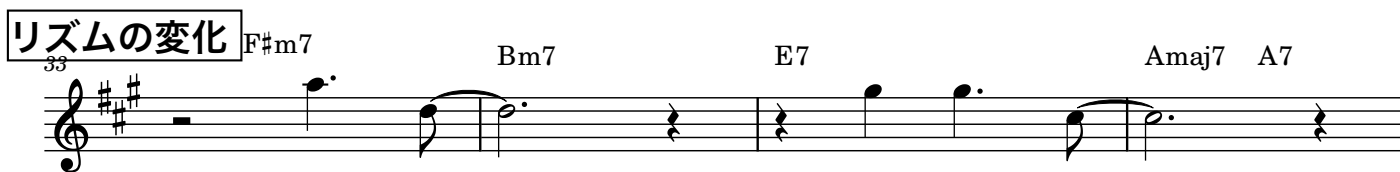
25

Bm7 E7 Amaj7 F#7

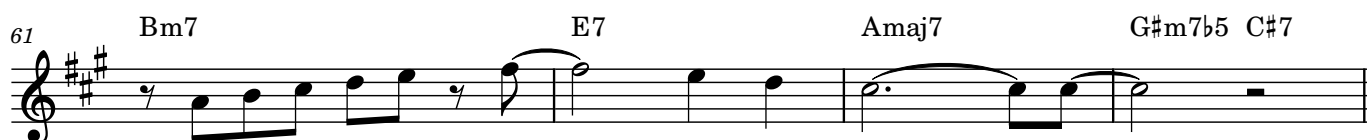
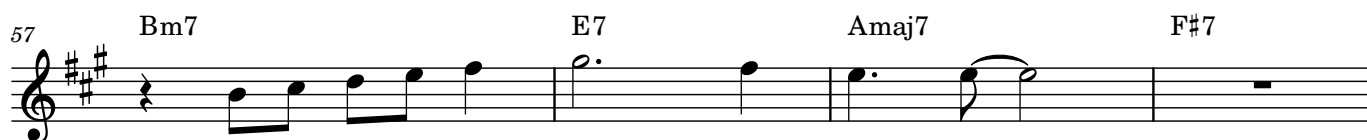
29 Bm7 E7 Amaj7 G#m7b5 C#7



## リズムの変化



## スケールで繋ぐ



65 **A** F#m7 Bm7 E7 Amaj7 A7

69 Dmaj7 G#m7b5 C#7 F#m7 F#7

73 **B** Bm7 E7 Amaj7 F#7

77 Bm7 E7 Amaj7 G#m7b5 C#7

81

85

89

93